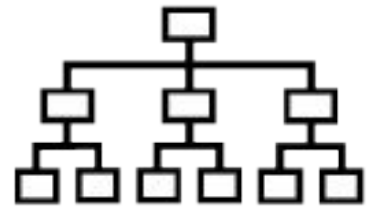


SLIME TIME



Slime Lab #1

Follow the recipe directions that your teacher gives you.

What were your results? _____

How did rules play an important part in creating your slime? _____

Slime Lab #2

Follow the recipe directions that your teacher gives you. Work as a team!

What were your results? _____

What did this slime experiment teach you?

Slime Lab #3

Follow the recipe directions that your teacher gives you.

What were the results?: _____

Which generalization statement did today's slime activities prove the most?

- System interact.
- Systems have parts that work to complete a task.
- Systems follow rules.
- Systems are composed of subsystems.
- Systems may be influenced by other systems.
- Parts of systems are interdependent upon one another and form symbiotic relationships.
